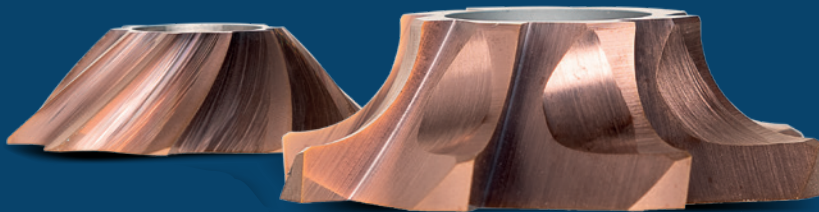




May 2025
CATALOG



Precision Beveling,
Effortless Performance.



WELCOME TO BEVELTOOLS

Beveltools' patented technology revolutionized metal beveling and rounding!

Since its introduction in 2015, we've taken our solution to the next level with Beveltools 3.0 in 2020. Our redesigned pneumatic and electric tools, along with improved cutters and guide bearings, deliver superior performance and durability.

Unlike traditional methods, which are physically demanding, inaccurate, and time-consuming, Beveltools was created with efficiency in mind. Our two ergonomic systems, Bevel Mite® and Bevel Mate®, make metal beveling, rounding, and weld preparation faster, easier, more precise, and cost-effective.



- ★ **Accurate and Consistent**
Precise angles and roundings for stronger welding joints, better bonding surface for paint/coatings and smoother cable entry holes.
- ★ **Faster work speed**
Faster beveling and rounding than conventional methods due to the unique design of the cutters.
- ★ **Long service life**
With careful use and depending on the type, one cutter can bevel up to 180m, and one radius cutter up to 300m.
- ★ **Lightweight and Handy**
Light and handy design allowing for minimal physical effort to operate the machines.
- ★ **No finishing required**
The results are immediate and speak for themselves. No need for finishing touches.
- ★ **Better working conditions**
The machines are designed to prevent sparks, dust, vibrations and to produce larger chips that fall to the ground immediately.



CONTENTS

Tool Platforms	06
Product Catagories	08
Mini Mite™	10
Bevel Mite®	12
User Story: Shipyard	16
Bevel Mate®	18
User Story: Food Industry	23
User Story: Construction	24
INOX Machines & Cutters	26
User Story: Metalworking	29
New Releases	28
Specials	30
Accessories	32
Contact	34

THREE TOOL PLATFORMS

For small or big jobs.



The latest tool brand to round out the Bevel Tool options. The Mini Mite™ is the ideal tool for precision rounding on thin metal plates, designed to round edges on both sides with exceptional finesse.

Currently, one tool has the Mini Mite™ designation: the ABIS-M Air. This machine works with compact R1 or R2 cutters on workpieces with a minimum 0,5mm nose.

6



Bevel Mite® denotes the line of tools for lighter beveling and rounding work, up to a depth of 6 mm. These tools are compact, manoeuvrable and lightweight. This makes them excellent for usage on smaller work pieces and in smaller holes as well.

Bevel Mite® tools are available with 2 motor types: electric motor (EBI), a pneumatic motor (ABIS).



Bevel Mate® denotes the line of very versatile tools that can handle more intense jobs as well. It can bevel up to 12mm and the largest radius is 8mm.

Bevel Mate® tools have more power and 'body', which makes them run very smooth and without any noticeable vibrations. Available with 2 motor types: electric motor (EBA) or pneumatic motor (ABA).

BEVELTOOLS 3.0

The Main Line

Bevel Tools 3.0 is our current main productline. It has been developed with all the experiences we gathered with our previous product iterations. Feedback from users and distributors worldwide gave us many ideas and chances to improve.

The latest Bevel Tools 3.0 versions have a spindle locking button, for easy change of cutters, and a freely rotating flange. The flanges are made of nitrated stainless steel to get the highest possible hardness, preventing scratches and improving the sliding capability.

Bevel Tools 3.0 is a line of very easy to use and incredibly reliable tools.

The 3.0 cutters for these tools are specially designed to get the most out of the tools – they cut easier and have significant longer service times, making it the best combination for your bevel- and rounding jobs.



THREE PRODUCT CATAGORIES

The right tool for the job.

With the right Beveltools cutters, you can always achieve the best end result, done quickly and cheaply.

The colour colour schemes on the right page makes it easier to recognize for which kind of material the product is most suitable.



BEVEL TOOLS

Best for regular steel.

BEVEL TOOLS

Best for stainless steel.

BEVEL TOOLS

Best for non ferro work pieces.



VERSION 3.0

Stronger construction steel, including plasma- or laser-cut steel, requires specialized cutter heads. The 3.0 cutter heads, made with advanced carbide components, premium coatings, and featuring patented geometric designs are perfect for these tougher materials. You can easily identify the 3.0 cutters by their bronze/copper-toned coating.

INOX

Stainless steel is tough and difficult to rework with hand tools. Our INOX cutters, specially designed for stainless steel, feature optimized geometry and a special coating. This reduces friction between the cutter and the material, making cutting stainless steel much easier. Our most common cutters are available in INOX, both for angles and radii.

ALU

Chips from non-ferrous metals like aluminum can stick to the cutting surfaces of a bevel head. Not with the ALU cutters — these cutters provide the ideal cutting edge for non-ferrous metals. The right geometry and coating ensure that aluminum, other non-ferrous metals, and even hard plastics can be beveled or rounded easily, without the need for lubricants.



The Mini Mite™ ABIS-M pneumatic tool is compatible with R1, R2, and 45° cutters, each with a cutting height of 4 mm and a 9 mm bearing diameter.

It's specifically designed for edge work on metal plates as thin as 2,5 mm, as long as a 0,5 mm nose is left on the edge of the workpiece.

ABIS-M

Part no.	1123111
Motor	Pneumatic
Max. bevel depth	4 mm
Available radius cutters	R1 - R2
Available bevel cutters	45°
Air Pressure	6,3 bar max. 91 PSI max.
Power	375 W
Recommended air flow	25 CFM 0,71 m3/min
Speed	25.000 rpm
Weight	1,07 kg
Min. hole diameter for beveling	11 mm
Min. hole diameter for rounding	11 mm

Cutters

VERSION
3.0



Type
Part no.



R1-04-V3.0
7011330



Type
Part no.



R2-04-V3.0
7011130



Type
Part no.



45-04-V3.0
7011030

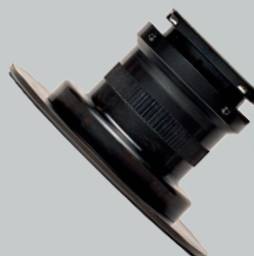




Spindle locking buttons:
Quick and easy to change
cutters.

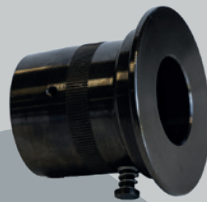


Freely rotating flange of QPQ
nitrated stainless steel:
Smooth and precise
operation.



EBI 3.0

Part no.	1041000
Motor	Electric
Max. bevel depth	6 mm
Available radius cutters	R2 - R3 - R4
Available bevel cutters	15° - 22,5° - 30° - 37,5° - 45° - 52,5° - 60°
Air Pressure	N/a
Power	600 W
Voltage Recommended air flow	230 V (Also available in 120 V)
Speed	Adjustable speed 5.000 - 13.000 rpm
Weight	2,46 kg
Min. hole diameter for beveling	22 mm
Min. hole diameter for rounding	16 mm



Flange head of hardened (nitrated) steel with a freely rotating flange and spindle locking button.

Safety lever to prevent accidental activation.



ABIS-R 3.0

ABIS-B 3.0

1123010

Pneumatic

±3 mm at 45°

R2 - R3 - R4

15° - 22,5° - 30° - 37,5° - 45° - 52,5° - 60°

6,3 bar max. | 91 PSI max.

375 W

25 CFM | 0,71 m3/min

25.000 rpm max

1.07 kg

22 mm

16 mm

1123110

Pneumatic

6 mm

R2 - R3 - R4

15° - 22,5° - 30° - 37,5° - 45° - 52,5° - 60°

6,3 bar max. | 91 PSI max.

820 W

25 CFM | 0,71 m3/min

16.000 rpm max

1.13 kg

22 mm

16 mm

Bevel Cutters



VERSION
3.0



Type
Part no.



15-06-V3.0
7105030



15-06-ALU
7106010



Type
Part no.



22-06-V3.0
7106030



22-06-ALU
7107010



Type
Part no.



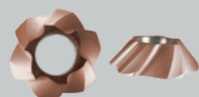
30-06-V3.0
7104030



30-06-ALU
7104010



Type
Part no.



37-06-V3.0
7103030



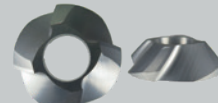
37-06-ALU
7103010



Type
Part no.



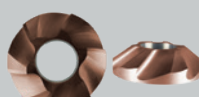
45-06-V3.0
7102030



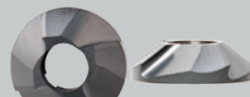
45-06-ALU
7102010



Type
Part no.



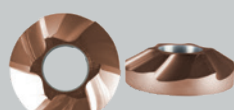
52-06-V3.0
7108030



52-06-ALU
7108010

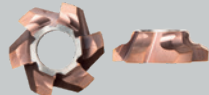
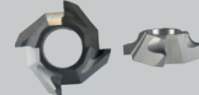
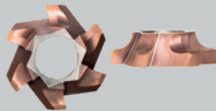
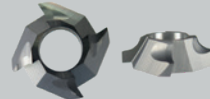
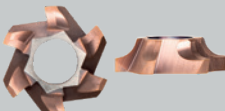
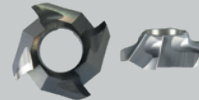


Type
Part no.



60-06-V3.0
7107030

Radius Cutters

VERSION
3.0Type
Part no.R2-06-V3.0
7101130R2-06-ALU
7101110Type
Part no.R3-06-V3.0
7101030R3-06-ALU
7101010Type
Part no.R4-06-V3.0
7101230R4-06-ALU
7101210

User story Shipyard



”

I started looking for a system that would immediately round off the steel without the need for deburring or polishing afterwards. I soon arrived at Beveltools.



Building yachts requires a great deal of craftsmanship. It comes as no surprise then, that a leading shipbuilder in steel motor yachts decided to try out Beveltools in their manufacture of yachts ranging from 8 to 15 meters. These yacht-builders have decades of experience in designing and finishes its yachts in-house. Each vessel meets the highest standards of quality by utilizing the best materials and techniques.

In yacht-building, precision in finishing is essential. According to a production leader at the shipyard: "Rounding sharp edges on the hull material is crucial to ensure that the coating and paint adhere properly. This enhances durability and it looks nice to the end user. Beveltools allows us to achieve a smooth, rounded finish that it does exactly that."



The shipbuilder's hull production team relies on Beveltools almost daily. "Previously, we would weld a tube to the top edge to create a rounding, followed by deburring to remove imperfections—an extremely time-consuming process. I sought out a more efficient method to round the steel edges without needing additional deburring or polishing, which led us to Beveltools," says the production leader.

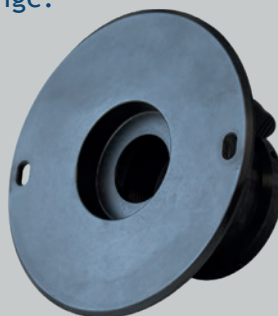
The EBA 3.0 machine paired with Beveltools' high quality bevel heads has proven to be the perfect solution. "The machine is lightweight, easy to handle, and portable. The R3 and R4 and bevel cutters we use have a long service life and are simple to replace when needed. Compared to alternatives, Beveltools gives us a fast and consistent way of rounding edges," they conclude.



Flangehead with depth adjustments.

Nitrated and freely rotating flange.

Variable Speed



EBA 3.0

Part no.	2031110
Motor	Electric
Max. bevel depth	12 mm
Available radius cutters	R2 - R3 - R4 - R5 - R6 - R8
Available bevel cutters	15° - 22,5° - 30° - 37,5° - 45° - 52,5° - 60°
Power	1.530 W
Voltage	230 V (Also available in 120 V)
Speed	Adjustable speed 5.000 - 10.000 rpm
Weight	4,5 kg
Min. hole diameter for beveling	41 mm
Min. hole diameter for rounding	22 mm

ABA 3.0 Air Tool

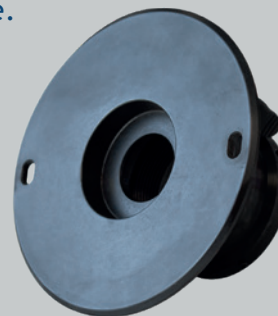


Safety lever

Flangehead with depth adjustments.



Nitrated and freely rotating flange.



ABA 3.0

Part no.	2042000
Motor	Pneumatic
Max. bevel depth	12 mm
Available radius cutters	R2 - R3 - R4 - R5 - R6 - R8
Available bevel cutters	15° - 22,5° - 30° - 37,5° - 45° - 52,5° - 60°
Air Pressure	6,3 bar max. 91 PSI max.
Power	1.100 W
Recommended air flow	38 CFM 1,1 m3/min
Speed	11.000 rpm max.
Weight	4,4 kg
Min. hole diameter for beveling	41 mm
Min. hole diameter for rounding	22 mm

Bevel Cutters



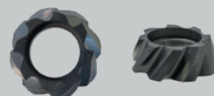
VERSION
3.0



Type
Part no.



15-08-V3.0
7205030



15-08-ALU
7205010



Type
Part no.



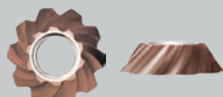
22-08-V3.0
7206030



22-08-ALU
7206010



Type
Part no.



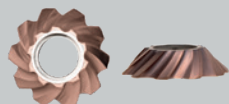
30-08-V3.0
7204030



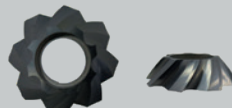
30-08-ALU
7204010



Type
Part no.



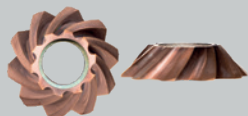
37-08-V3.0
7203030



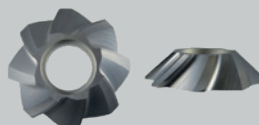
37-08-ALU
7203010



Type
Part no.



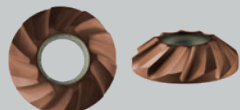
45-08-V3.0
7202030



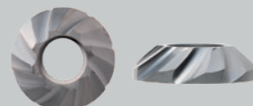
45-08-ALU
7202010



Type
Part no.



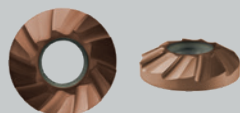
52-08-V3.0
7208030



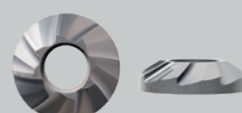
52-08-ALU
7208010



Type
Part no.



60-08-V3.0
7207030

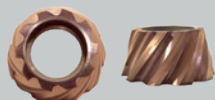


60-08-ALU
7207010

Bevel Cutters

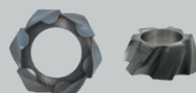


VERSION
3.0

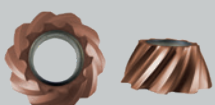


Type
Part no.

15-12-V3.0
7305030



15-12-ALU
7305010

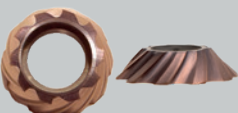


Type
Part no.

22-12-V3.0
7306030



22-12-ALU
7306010

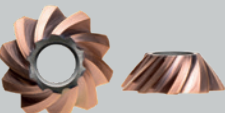


Type
Part no.

30-12-V3.0
7304030



30-12-ALU
7304010

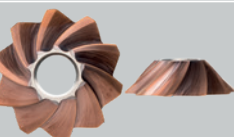


Type
Part no.

37-12-V3.0
7303030

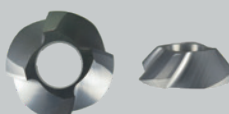


37-12-ALU
7303010

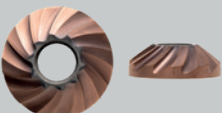


Type
Part no.

45-12-V3.0
7302030

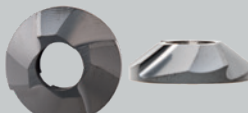


45-12-ALU
7302010

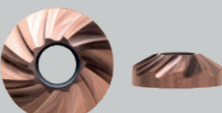


Type
Part no.

52-12-V3.0
7308030

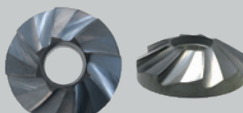


52-12-ALU
7308010



Type
Part no.

60-12-V3.0
7307030



60-12-ALU
7307010

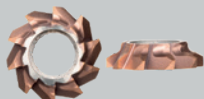
Radius Cutters



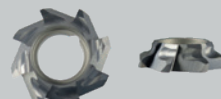
VERSION
3.0



Type
Part no.



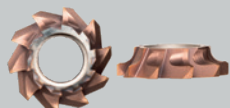
R2-08-V3.0
7201130



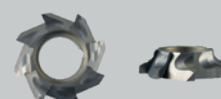
R2-08-ALU
7201110



Type
Part no.



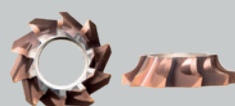
R3-08-V3.0
7201030



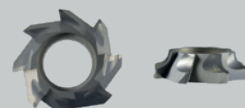
R3-08-ALU
7201010



Type
Part no.



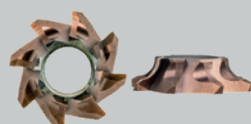
R4-08-V3.0
7201230



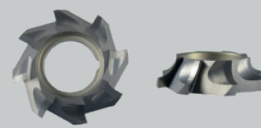
R4-08-ALU
7201210



Type
Part no.



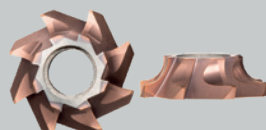
R5-08-V3.0
7201330



R5-08-ALU
7201310



Type
Part no.



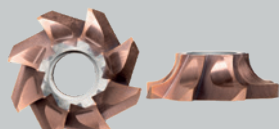
R6-10-V3.0
7201430



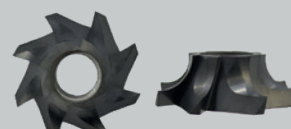
R6-10-ALU
7201410



Type
Part no.



R8-12-V3.0
7301630



R8-12-ALU
7301610

User story

Food Industry



”

Using the Bevel Mate or Mite® for beveling works beautifully, but for us, its real strength lies in creating radii on metal. The amount of time saved is huge.

MF Emmen regularly works on challenging projects that involve adding various radii of 2, 3, and 5 mm, which is crucial for the client. The final products are industrial constructions used across a wide range of industries, from energy to food.

MF Emmen shares some details about their methods: previously, these tasks were done using a grinding tool and other hand tools, a time-consuming process requiring a lot of rework. Now, however, they use the Bevel Mite® and Bevel Mate®.

The difference is substantial: where they used to spend many hours applying curves to metal edges, Beveltools has already saved them about 40 hours on this project of a few weeks. This is a significant time saving, especially for large projects. More projects involving radius 2 roundings are on the horizon.

For welding preparation, they use other tools such as a CNC machine and a nibbler. This has greatly accelerated the process and drastically reduced rework. However, not everyone has access to a CNC machine, and it can be a significant investment.

MF Emmen works on projects involving more than ten workers, where the Bevel Mate® and Mite® are perfect additions to their workflow. All of this shows that MF Emmen is constantly looking for ways to improve their processes and better serve their clients.



User story

Construction



”

The combination of the further developed machine and the special INOX 30° milling cutter resulted in a rework-free welding edge.

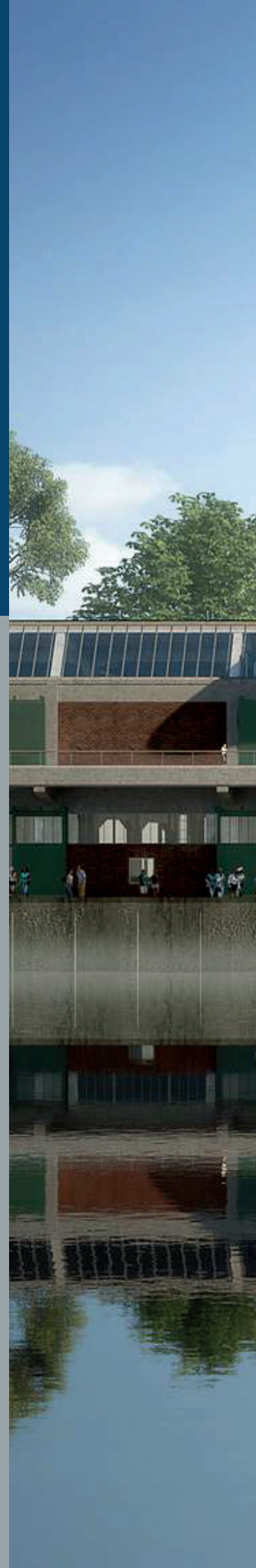
24

CIG from Groningen is a renowned global player in architectural constructions and works of art. Their advanced construction techniques enable architects and artists worldwide to create beautiful structures, including stainless steel projects. You can explore their projects at www.cig-eu.com.

The workshop manager was particularly curious about how the INOX line could benefit their assembly and production processes.

He explained, “For our stainless steel projects, many edges need to be processed again for a perfect 30° weld edge. Precision is key in our work, and the INOX solution proved invaluable.”

It was in this project that the INOX solution was refined: initially using 3.0 cutters, specially developed INOX cutters for stainless steel were created. This resulted in rework-free welding edges and long-lasting cutter life. The fast, quiet, and vibration-free performance was highly appreciated by the team.







Every INOX machine boasts its individual set of specifications, catering to diverse needs. Notably, the rotational speed (RPM) of INOX tools is intentionally reduced compared to the version 3.0 tools, necessitating a more robust motor.

The challenge of working on stainless steel is removed with the INOX line, as a special inbuilt system dampens vibrations. This allows for flawless beveled and rounded stainless steel edges.

EBA INOX

Part no.	2051100
Motor	Electric
Max. bevel depth	8 mm
Available radius cutters	R2 - R3 - R4 - R6
Available bevel cutters	15° - 22,5° - 30° - 37,5° - 45° - 52,5° - 60°
Air Pressure	N/a
Power	1.100 W
Voltage Recommended air flow	230 V (Also available in 120 V)
Speed	Adjustable speed 1.100 - 3.600 rpm
Weight	5,65 kg
Min. hole diameter for beveling	41 mm
Min. hole diameter for rounding	22 mm



EBI INOX

ABIS INOX

1051000

1125110

Electric

Pneumatic

6 mm

6 mm

R2 - R3

R2 - R3

30 - 45

30 - 45

N/a

6,3 bar max. | 91 PSI max.

600 W

820 W

230 V (Also available in 120 V)

0,62 m³/min

Adjustable speed 2.700 - 6.000 rpm

6.000 rpm max

2.46 kg

1.5 kg

22 mm

22 mm

16 mm

16 mm



Type
Part no.



R2-08-INOX
7201150



R2-06-INOX
7101150



Type
Part no.



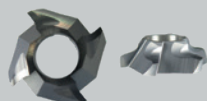
R3-08-INOX
7201050



R3-06-INOX
7101050



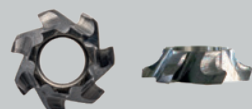
Type
Part no.



R4-08-INOX
7201250



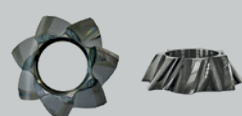
Type
Part no.



R6-08-INOX
7201450



Type
Part no.



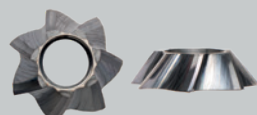
30-08-INOX
7204050



30-06-INOX
7104050



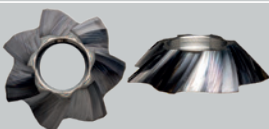
Type
Part no.



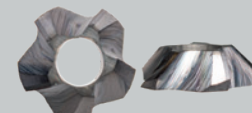
37-08-INOX
7203050



Type
Part no.



45-08-INOX
7202050



45-06-INOX
7102050

User story Metalworking



”

"Beveltools is an effective method to meet the requirements to safely operate Cobots, while making the Cobot robots look nice."



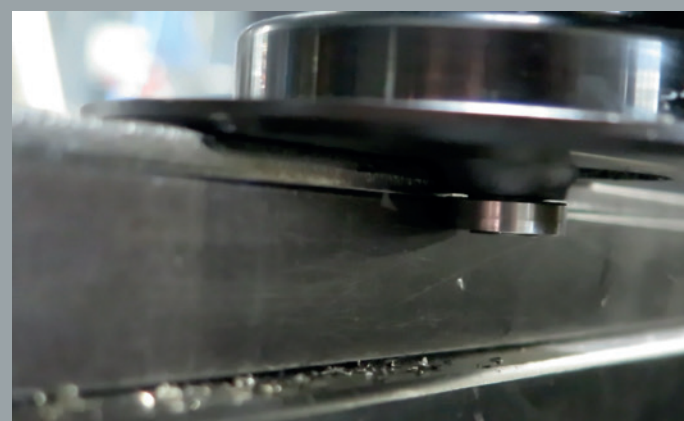
Goodspeed Steelshop produces Cobot robots designed to place boxes on pallets at the end of a production process. The Cobot uses laser-cut and edged parts that cannot be CNC cut in one piece, which made it essential to provide these parts with a specific radius. Conventional methods struggled with the complexity of the shapes.

Previously, achieving the required radius for all parts was impossible. The solution had to be aesthetically pleasing, meet safety standards, and specifically address working with stainless steel to achieve a radius of R4.

Goodspeed Steelshop turned to Beveltools to address this issue, making it possible to apply the required radius to laser-cut and edged sheet metal parts. Beveltools applied the radius, a fibre disc provided trimming and an eccentric rotary sander finished for a smooth finish. The final step is a glass bead

Using Beveltools cutters and machines provided a precise radius, crucial for the safety and appearance of the Cobot. The solution saves production time and avoids the need for solid cut boards, which would be more expensive and time-consuming. Goodspeed Steelshop made use of the INOX line of machines due to the stainless steel materials of the Cobot.

Goodspeed Steelshop expects Beveltools machines to be valuable in future projects, and work is underway on new applications and models within the Cobot robot line. Beveltools will play a crucial role in ensuring the quality and aesthetics of these products.



SPECIALS

Large and Small Table Machines.



Flange head with integrated MQL channels.

- 1.1 kW motor with frequency control.
- Included MQL (Minimum Quantity Lubrication) unit.
- Workpiece width: max. 780 mm/length unlimited.
- Power consumption: 400 V, 50 Hz, 10 A, 6 kW.
- Dimensions: 1435 x 1100 x 1510 mm (L x W x H).
- Weight: 445 kg.

TopEdge

Table Milling Machine

The Beveltools TopEdge table milling machine is the result of a long-standing collaboration between Q-Fin and Beveltools. It is a proven concept that has been improved with the new flange head developed by Beveltools. The TopEdge is a perfect solution for smaller objects and/or repetitive work.

The TopEdge is a manually operated machine that allows you to easily and quickly mill various radii or weld edges at various angles. The motor has a stepless adjustable speed and a clamping table. Workpieces can be firmly clamped to the table using regular clamps or the included electromagnets, which can be switched on and off very easily.

For a safe working environment, the TopEdge has a two-button control on the handle for safety. The balanced arm allows your staff to operate the machine in the most comfortable way, without having to use force or carry the machine for long periods of time. The TopEdge itself is also easy to move around thanks to its castor wheels.

When tested, the vibration levels of the TopEdge averaged just 0.5 m/s^2 , far below the maximum allowed exposure limit of 2.5 m/s^2 .

The Beveltools TopEdge has been developed together with Q-Fin to quickly provide your workpiece with a perfect angle or radius using Bevel Mate® cutters. All available Bevel Mate® cutters (8mm & 12mm), including the INOX cutters, can be used on the Beveltools TopEdge.

Part no.	Part Name.
1501000	Bevel Mate® TopEdge

SPECIALS

Large and Small Table Machines.



Footswitch



TEBI Guide

- Power: 1050 W
- Voltage: 120V / 230V
- Stepless speed 3.000 - 24.000 rpm
- Dimensions: 45×35×40 cm
- Weight: 48 kg.

TEBI 4.0

Inverted Table Cutter

With the TEBI, you simply move the workpiece along the Bevel Mite® (Or, optionally, the Mini Mite™) cutter that raises out of the table. This makes it easy to bevel or round a variety of workpieces, including smaller objects, holes, and curved workpieces. The TEBI is easy to use. Simply choose your bevel head or radius cutter, set the required speed and depth and slide your workpiece along the cutter. You'll get a perfect result instantly. The TEBI 4.0 comes with a protective Cutter Cap.

Part no.	Part Name.
----------	------------

1603000	Bevel Mite® TEBI 4.0 120V
---------	---------------------------

1602000	Bevel Mite® TEBI 4.0 230V
---------	---------------------------

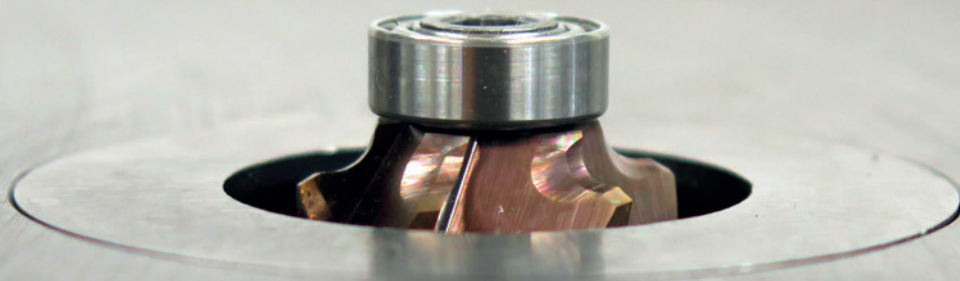
1601001	Bevel Mite® TEBI 4.0 Guide
---------	----------------------------

1601002	Bevel Mite® TEBI 4.0 Foot Switch
---------	----------------------------------

9602002	TEBI 4.0 Mini Mite™ Adaptor
---------	-----------------------------

Optional TEBI 4.0 additions are:

- * TEBI Guide — giving you guidance and is also prepared to combine with an MQL system.
- * Foot Switch — Operate the TEBI 4.0 Hands-Free.
- * Mini Mite™ Adaptor — Combine the TEBI with our smallest cutters with a quick adaptor change.



ACCESSORIES

Bevel Mate® Guide

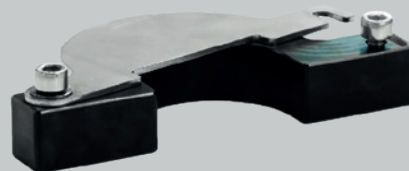
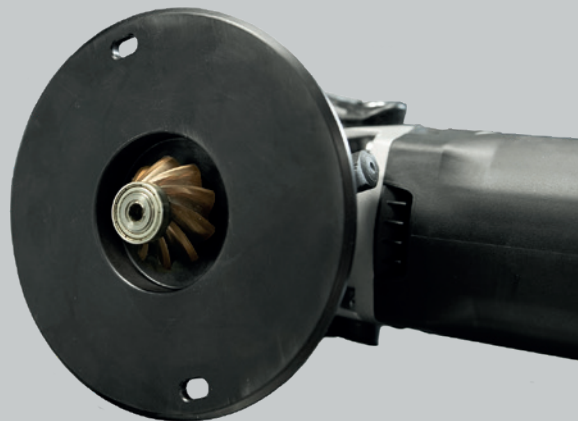
Extra guidance and security

Since early 2025, all Bevel Mate® machines are equipped with 3.1 Flange Heads. These updated flanges allow you to easily mount the Bevel Mate® Guide, an attachment that provides enhanced stability and control during beveling and rounding tasks.

The Bevel Mate® Guide acts as a physical support to maintain consistent operation. It also ensures that chips are neatly directed downward.

The Bevel Mate® Guide is a separate attachment compatible with both EBA and ABA machines that are fitted with the 3.1 Flange Head.

If you have an EBA or ABA machine with an older Flange Head, upgrading to Flange Head 3.1 is required to use the Guide.



Part no.	Part Name.
----------	------------

8233300	Bevel Mate® Guide 3.1
---------	-----------------------



ACCESSORIES

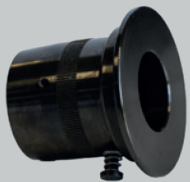
Order individual parts when needed.



Guide Bearings

Part no. Part Name.

9400003	Guide bearing xx-06-C	For all 6mm cutters
9400006	Guide bearing xx-08B-C	For bevel cutters
9400005	Guide bearing xx-08R-C	For R2-R3-R4 cutters
9400004	Guide bearing xx-12-C	For bevel cutters
9400014	Guide bearing xx-R6R8-12-C	For R6/R8 cutters
9199101	ABIS-M Spindle	For Mini Mite™ cutters



Flange Heads

Part no. Part Name.

8233010	Flange head 3.1 for all EBA's & ABA's
8232010	Flange head for EBI 3.0
9140201	Flange head for ABIS-R & ABIS-B



Repair Sets

Part no. Part Name.

9700211	Adapter repair set EBA 3.0
9330153	Adapter repair set ABA 3.0
9150125	Adapter repair set EBI 3.0
9140127	Adapter repair set ABIS-R & ABIS-B



BEVELTOOLS
LINKEDIN



BEVELTOOLS
PRODUCT
VIDEOS



BEVELTOOLS
INSTRUCTION
VIDEOS



CONTACT

Beveltools B.V.
Florijnweg 33
6883 JN Velp
The Netherlands

T +31 (0)26 369 92 22
E info@beveltools.com

Distribution USA
Beveltools Inc.
PO BOX 1573
Sikeston
MO 63801
United States of America
T +1 636 579 9421
E sales@beveltools.com

www.beveltools.com



Online Catalog



www.beveltools.com